

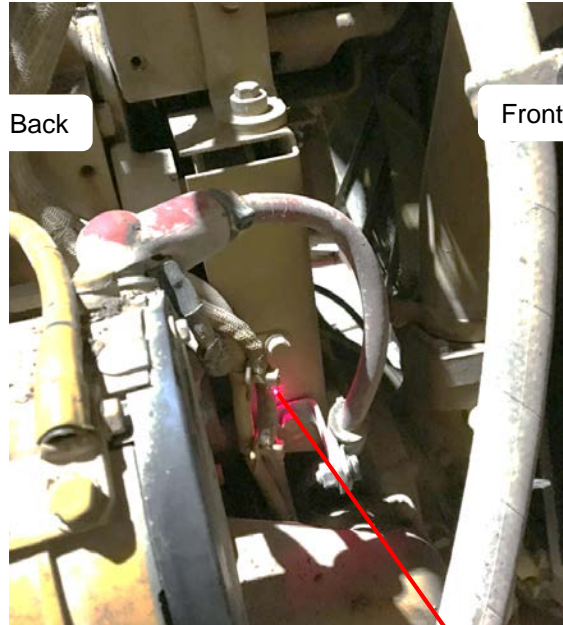
### N1 Nozzle

- Locate **N1** on lower front right vertical engine compartment support.
- Aim **N1** in, covering lower front right corner of engine.

Location – Back/Left View



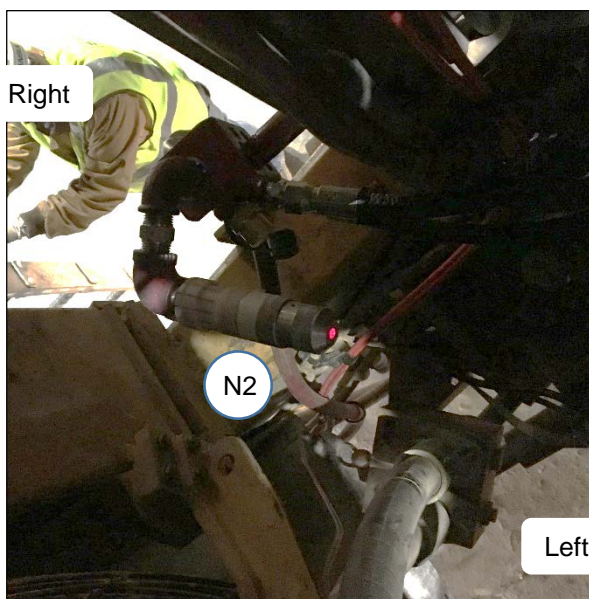
Coverage – Right View – Aim Point



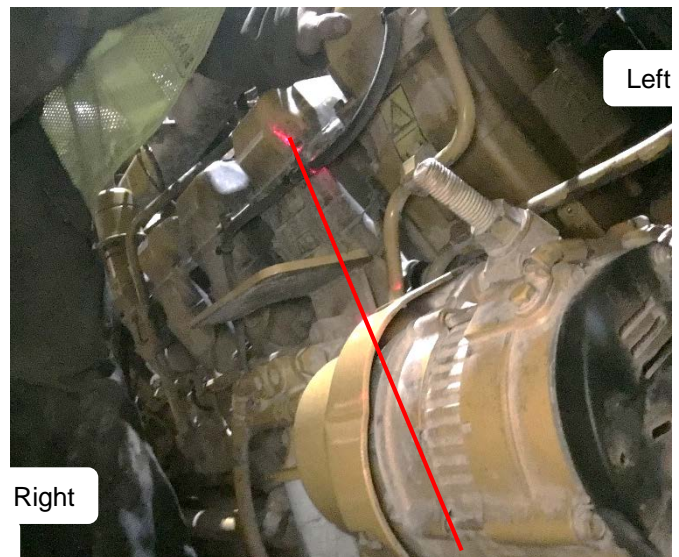
### N2 Nozzle

- Locate **N2** above **N1**, off of lower front right vertical engine compartment support.
- Aim **N2** up and back, covering alternator and front right-side of engine.

Location – Top/Left View



Coverage – Front/Right View – Aim Point



**CAT 793D (HAA), LVS-9.5 NOZZLE SCHEDULE**

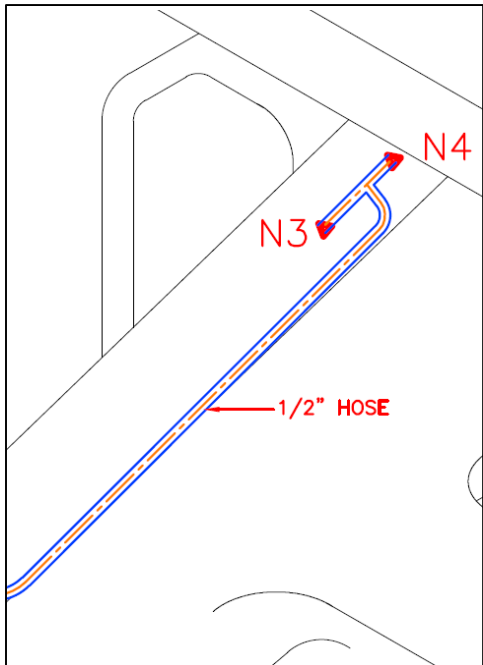
(Form No. F-2018071)

PAGE 2 REV. 0 2018-MAY-11

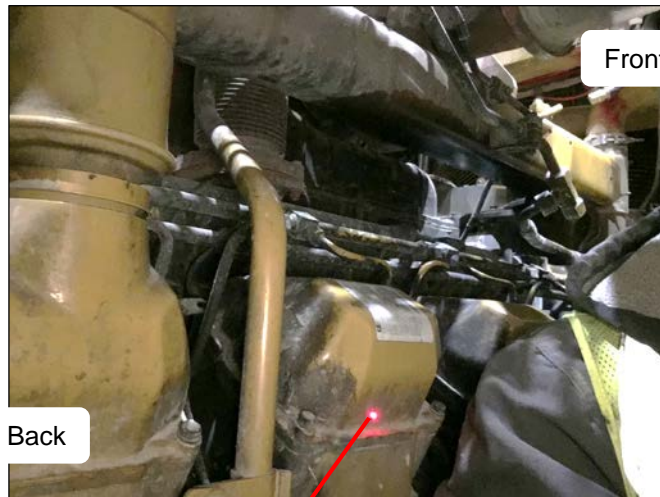
**N3 Nozzle**

- Locate **N3** on lower right frame, center of engine.
- Aim **N3** slightly up and forward, covering lower front right-side of engine and valves.

**Location – Front View**



**Coverage – Back/Right View – Aim Point**



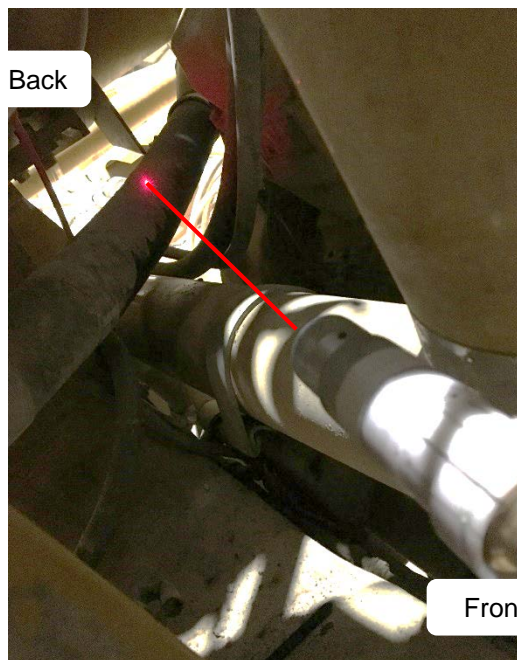
**N4 Nozzle**

- Locate **N4** on lower right frame, center of engine.
- Aim **N4** slightly up and back, covering lower back right-side of engine.

**Location – Front View**



**Coverage – Front/Right-Side – Aim Point**

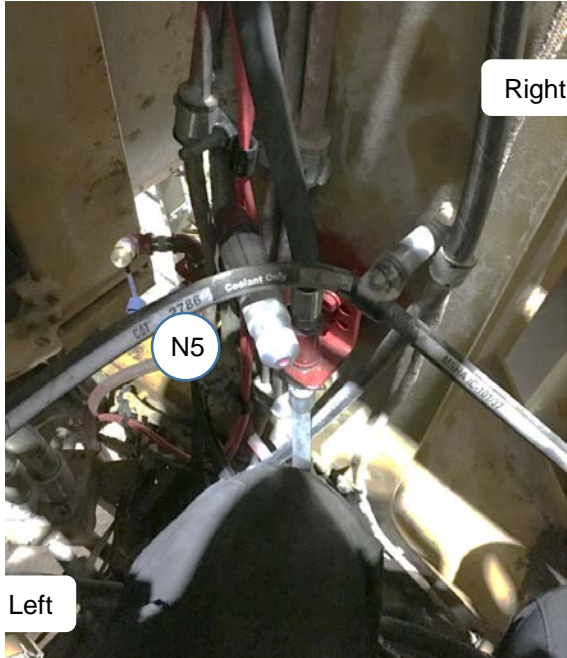




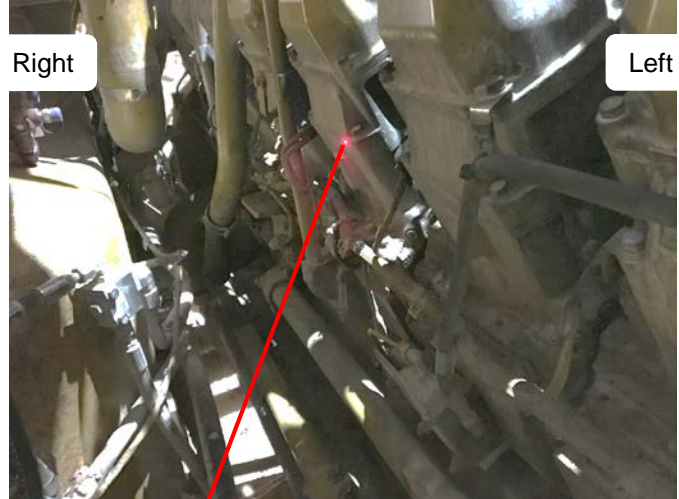
**N5 Nozzle**

- Locate **N5** at base of front right vertical support of engine compartment.
- Aim **N5** back, covering lower right-side of engine and fuel filter area.

**Location – Top/Left View**



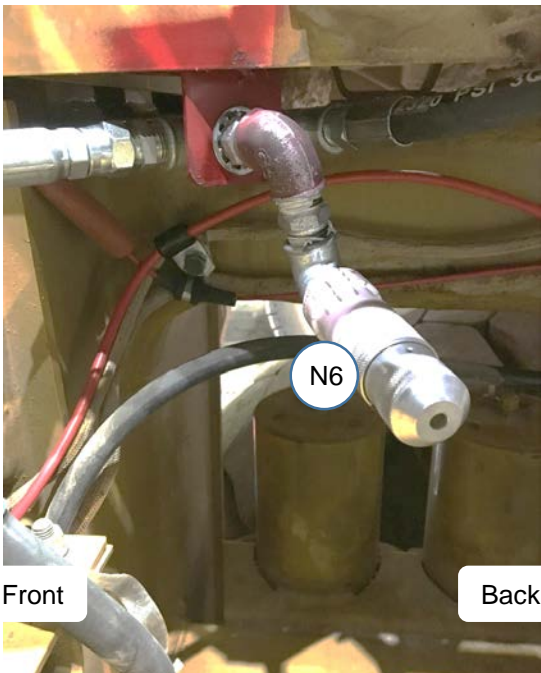
**Coverage – Front/Right View – Aim Point**



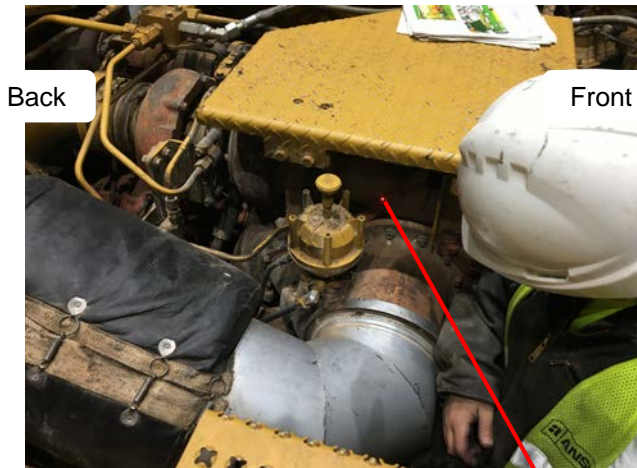
**N6 Nozzle**

- Locate **N6** under upper front right engine compartment deck behind support tube.
- Aim **N6** slightly down and back, at 16 in. turbo, covering front right turbo pack and front side of engine.

**Location – Left View**



**Coverage – Right View – Aim Point**



**CAT 793D (HAA), LVS-9.5 NOZZLE SCHEDULE**

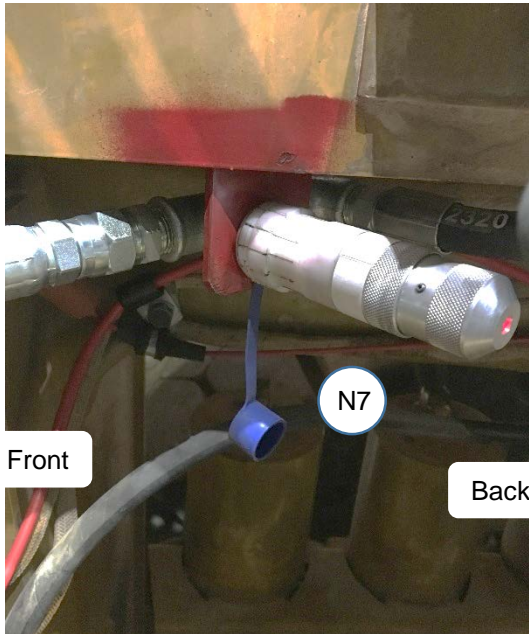
(Form No. F-2018071)

PAGE 4 REV. 0 2018-MAY-11

**N7 Nozzle**

- Locate **N7** under front-side of upper right engine compartment step.
- Aim **N7** down and back, at 12 in. turbo, covering front right turbo pack and center engine area.

**Location – Left View**



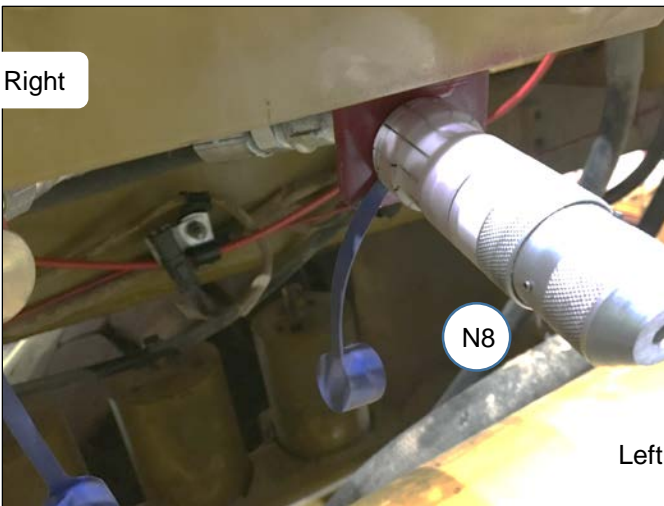
**Coverage – Front/ Right View – Aim Point**



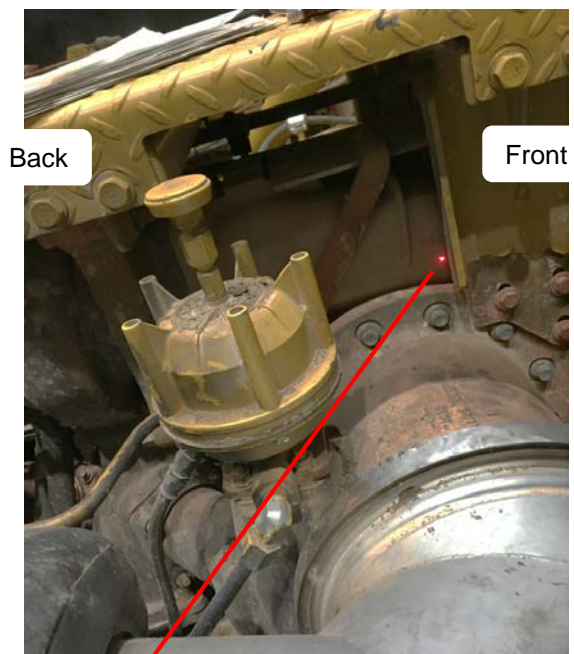
**N8 Nozzle**

- Locate **N8** under backside of right front step of the engine compartment.
- Aim **N8** down and forward at the 16 in. turbo, covering the front right turbo pack and front side of the engine.

**Location – Front/Left View**



**Coverage – Right View – Aim Point**





**N9 Nozzle**

- Locate **N9** on right-side of front support tube.
- Aim **N9** down, at center of engine; covering front engine area, right-side 16 in. turbo, and alternator.

**Location – Back/Right View**



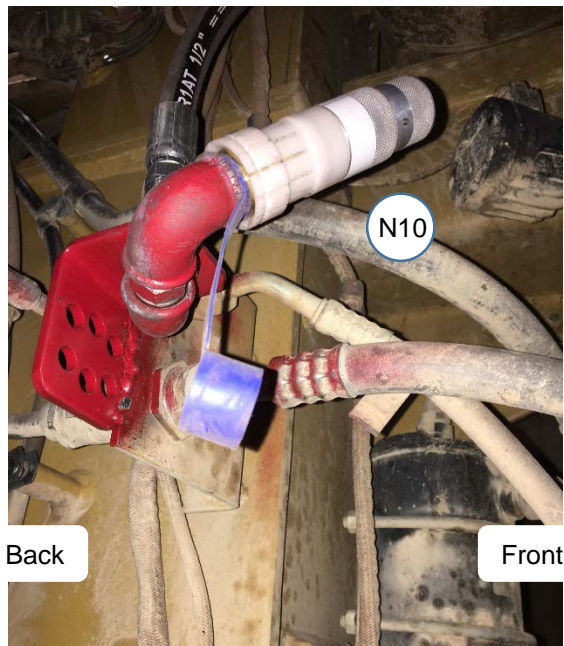
**Coverage– Front/Right View – Aim Point**



**N10 Nozzle**

- Locate **N10** on the upper left corner of the engine compartment.
- Aim **N10** down, back, and in, at upper center of engine.

**Location – Front/Right View**



**CAT 793D (HAA), LVS-9.5 NOZZLE SCHEDULE**

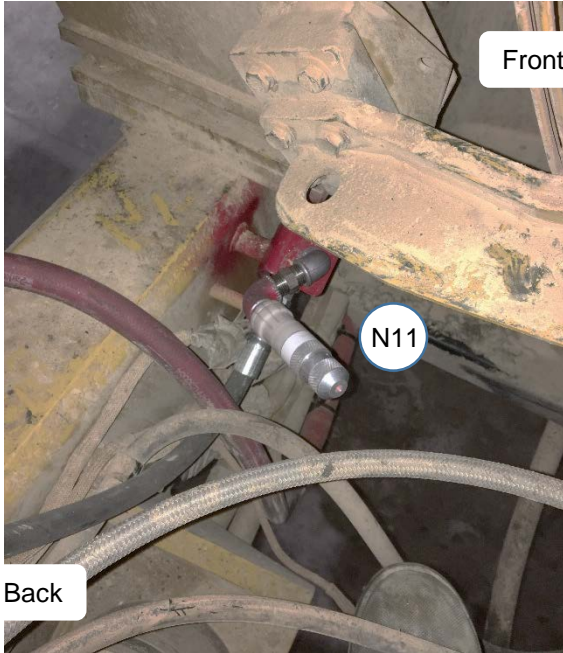
(Form No. F-2018071)

PAGE 6 REV. 0 2018-MAY-11

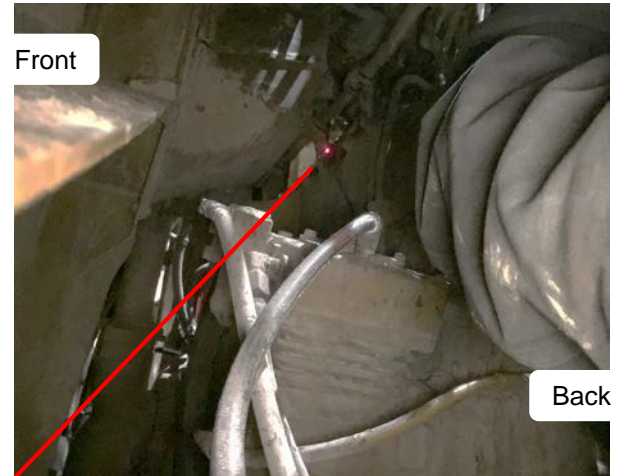
**N11 Nozzle**

- Locate **N11** on the lower front left support, past the strut.
- Aim **N11** back and up, covering the starter and bottom left-side of the engine.

**Location – Back/Right View**



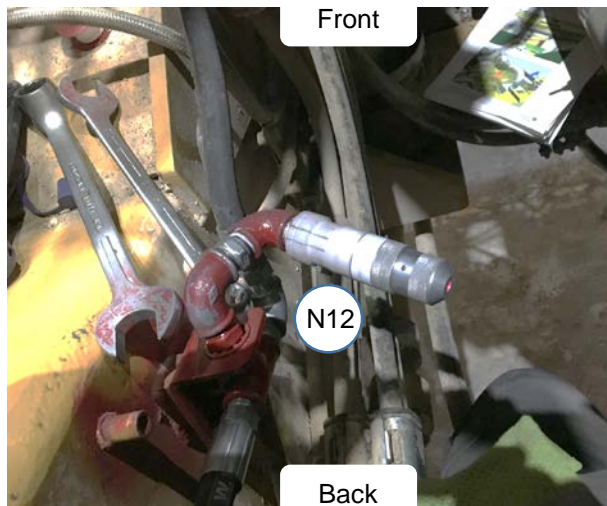
**Coverage – Left View – Aim Point**



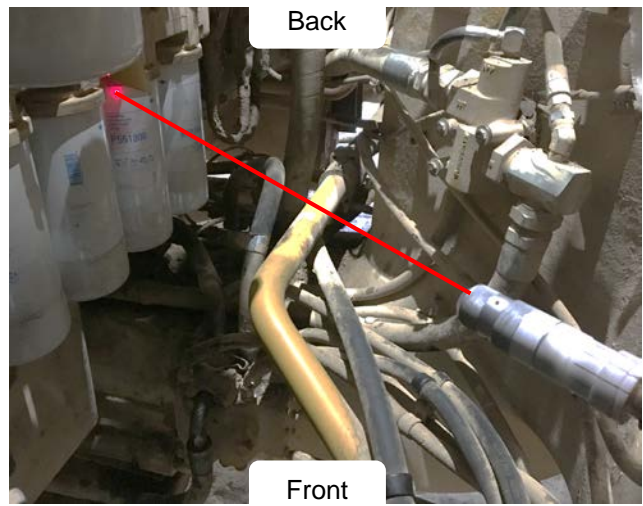
**N12 Nozzle**

- Locate **N12** on front left lower frame rail in engine compartment.
- Aim **N12** slightly up and back, covering filters, and lower left-side of engine.

**Location – Back View**



**Coverage – Front/Left View – Aim Point**

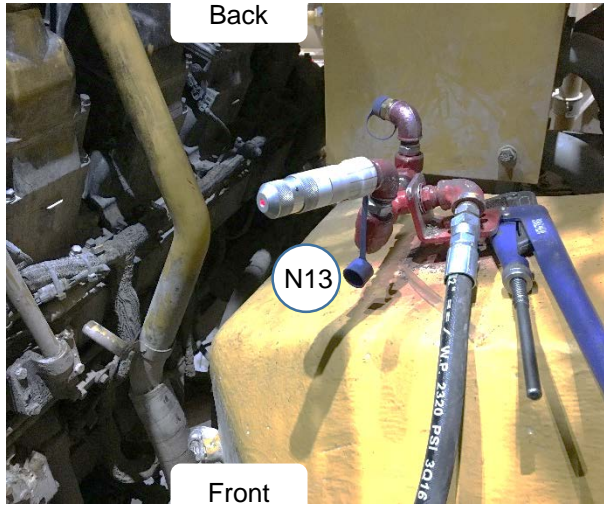




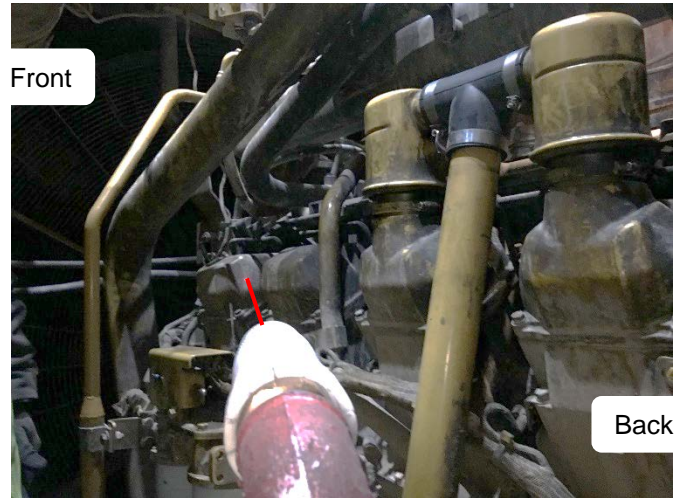
**N13 Nozzle**

- Locate **N13** on left frame, at center of engine compartment.
- Aim **N13** forward and in, covering front left-side of engine.

**Location – Front/Left View**



**Coverage – Back/Left View – Aim Point**



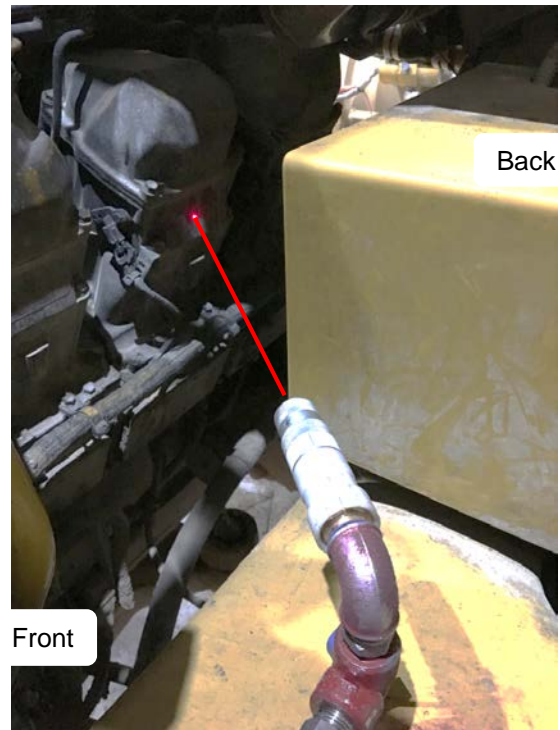
**N14 Nozzle**

- Locate **N14** on left frame, at center of engine compartment.
- Aim **N14** back and in, covering back left-side of engine.

**Location – Front/Right View**



**Coverage – Front/Left View – Aim Point**



**CAT 793D (HAA), LVS-9.5 NOZZLE SCHEDULE**

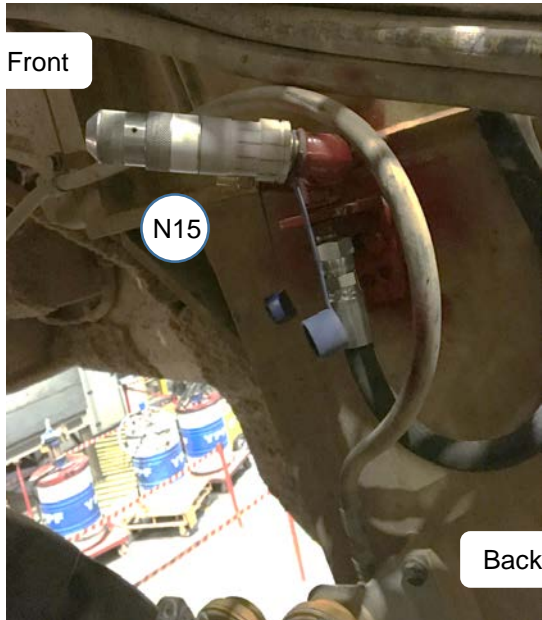
(Form No. F-2018071)

PAGE 8 REV. 0 2018-MAY-11

**N15 Nozzle**

- Locate **N15** on backside of vertical left frame support, underneath cab.
- Aim **N15** out up and forward, covering underside of cab.

**Location – Back/Left View**



**Coverage – Right/Front View – Aim Point**



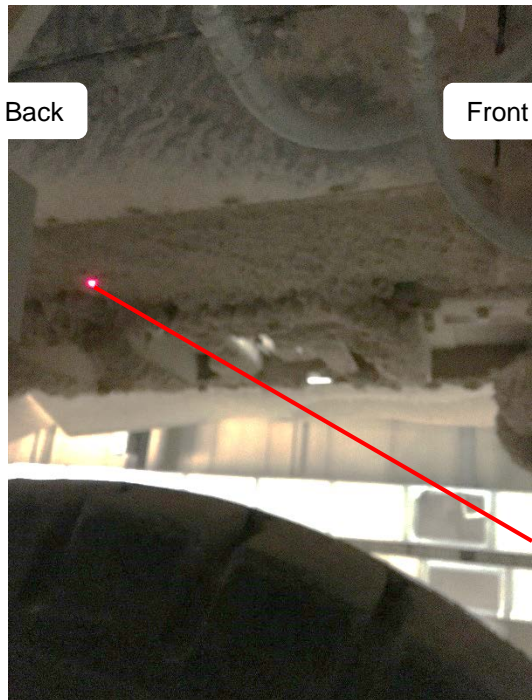
**N16 Nozzle**

- Locate **N16** on backside of vertical left frame support, underneath cab.
- Aim **N16** out back and up, covering underside of cab.

**Location – Back View**



**Coverage – Right View – Aim Point**

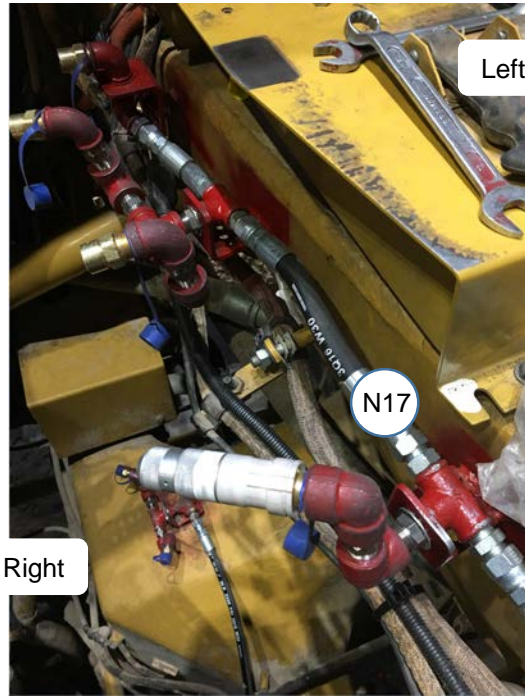




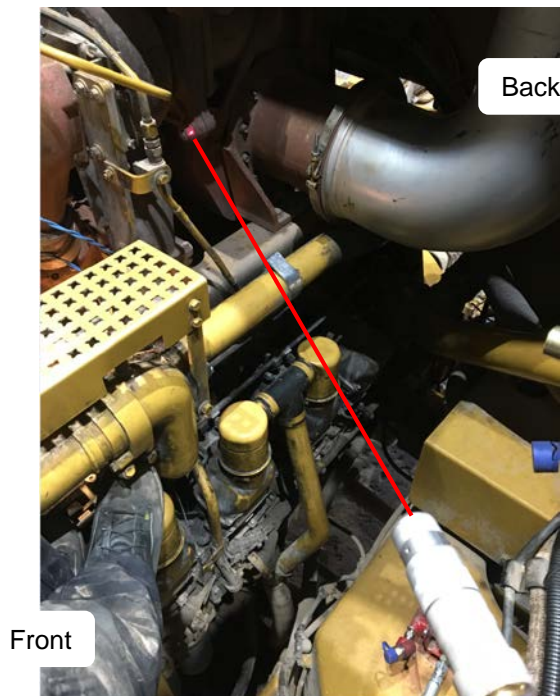
**N17 Nozzle**

- Locate **N17** nozzle on upper left frame below step, in engine compartment.
- Aim **N17** down and back, at turbo, covering back left turbo.

**Location– Front View**



**Coverage – Left View – Aim Point**



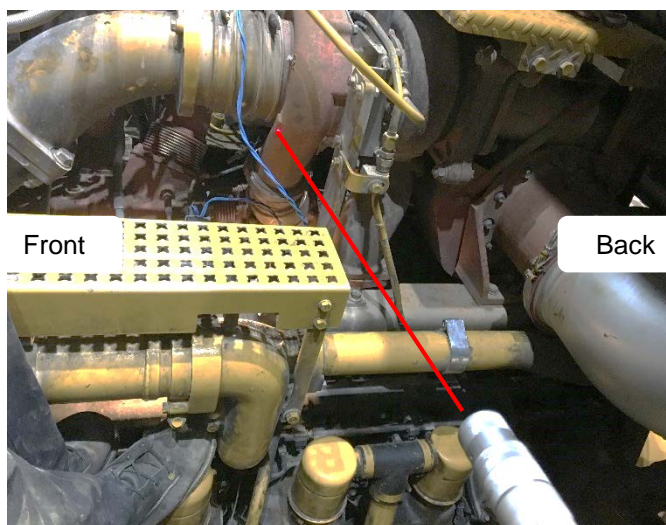
**N18 Nozzle**

- Locate **N18** nozzle along the upper left frame below the step, in the engine compartment.
- Aim **N18** in, down, and slightly back at the 12 in. turbo, covering the back left turbo pack and top left engine area.

**Location – Front View**



**Coverage – Left View – Aim point**





**CAT 793D (HAA), LVS-9.5 NOZZLE SCHEDULE**

(Form No. F-2018071)

PAGE 10 REV. 0 2018-MAY-11

**N19 Nozzle**

- Locate **N19** along the upper left frame below the step, in the engine compartment.
- Aim **N19** down and slightly back at the 16 in. turbo, covering the back left turbo pack.

**Location – Front View**



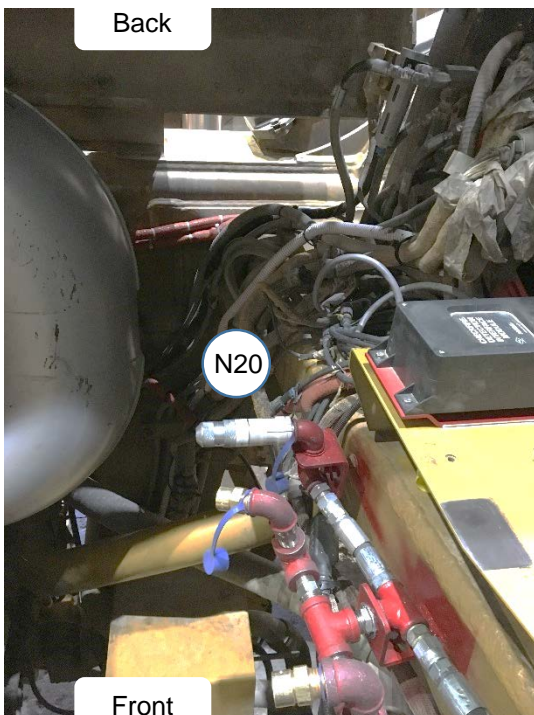
**Coverage – Left View – Aim Point**



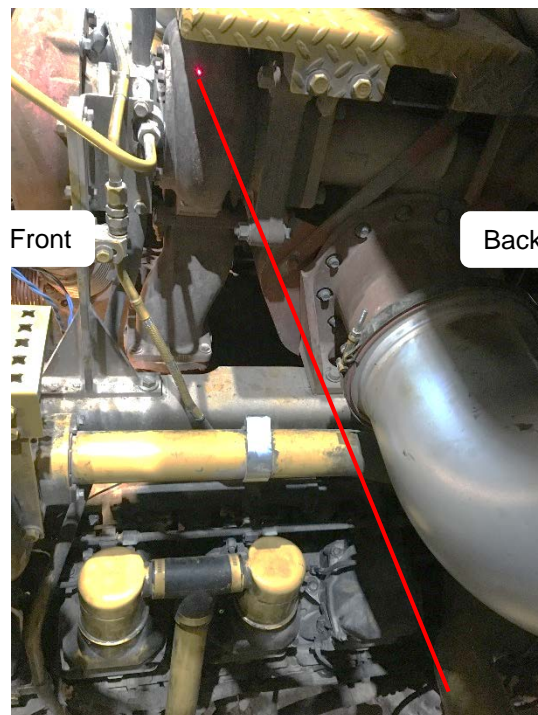
**N20 Nozzle**

- Locate **N20** along the left frame rail below the step, in the engine compartment
- Aim **N20** down and slightly back at 16 in. turbo, covering the back left turbo package.

**Location – Front View**



**Coverage – Left View – Aim Point**

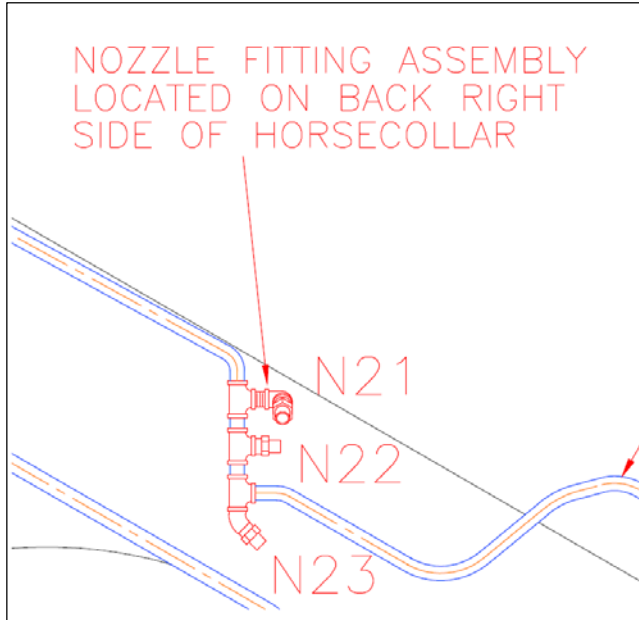




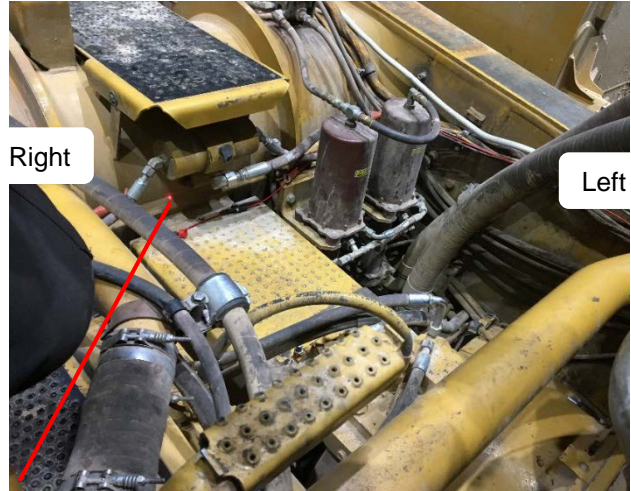
**N21 Nozzle**

- Locate **N21** on the back right-side of the horse collar.
- Aim **N21** down and back, covering the transmission and hydraulics.

**Location – Front/Left View**



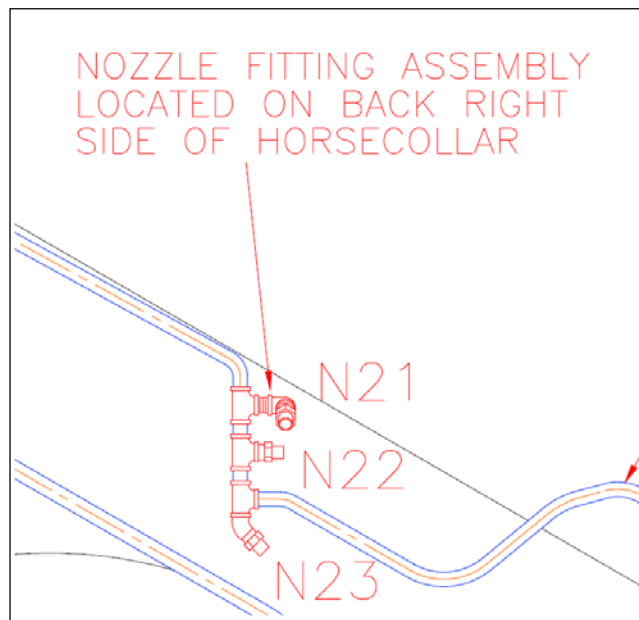
**Coverage – Front/Right View – Aim Point**



**N22 Nozzle**

- Locate **N22** on back right-side of horse collar.
- Aim **N22** in, covering hydraulic connections and backside of engine compartment.

**Location – Front/Left View**



**Coverage – Right View – Aim Point**



**CAT 793D (HAA), LVS-9.5 NOZZLE SCHEDULE**

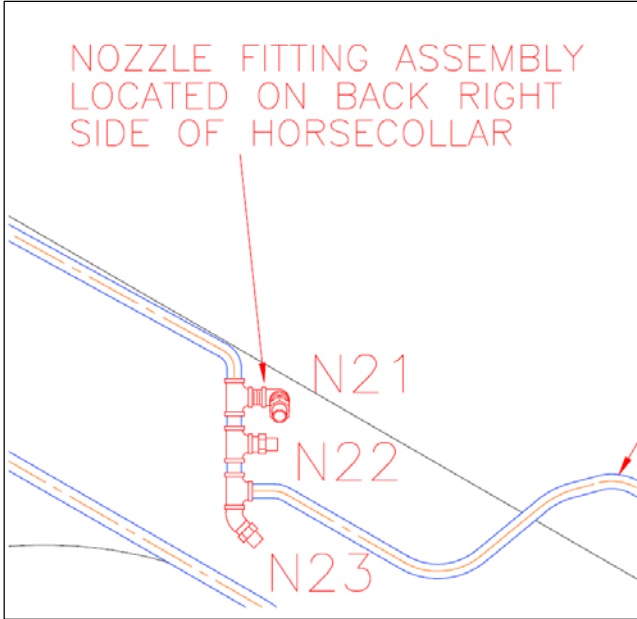
(Form No. F-2018071)

PAGE 12 REV. 0 2018-MAY-11

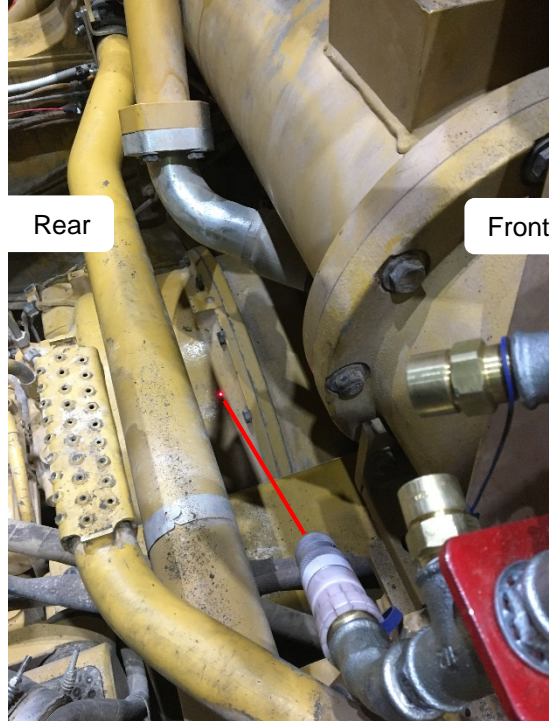
**N23 Nozzle**

- Locate **N23** on the back right-side of the horse collar.
- Aim **N23** down and in, covering the hydraulic connections and transmission.

**Location – Front/Left View**



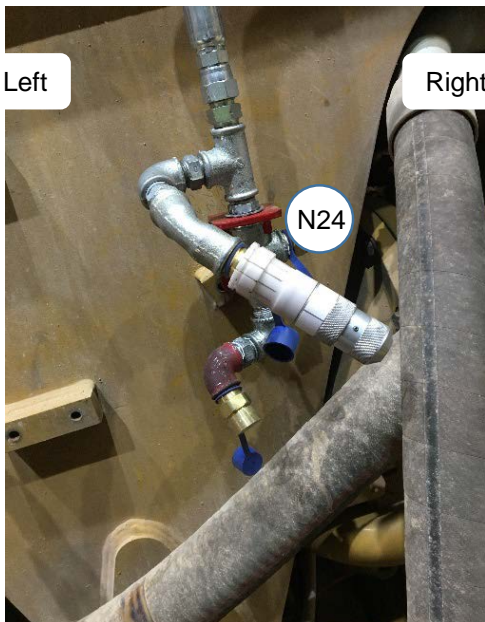
**Coverage – Right View – Aim Point**



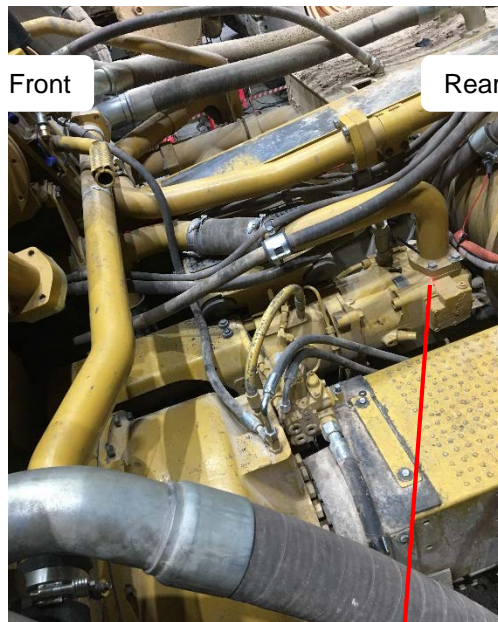
**N24 Nozzle**

- Locate **N24** on the back left-side of the horse collar.
- Aim **N24** down and back, covering the hydraulic pump and hose connections.

**Location – Back View**



**Coverage – Left View – Aim Point**

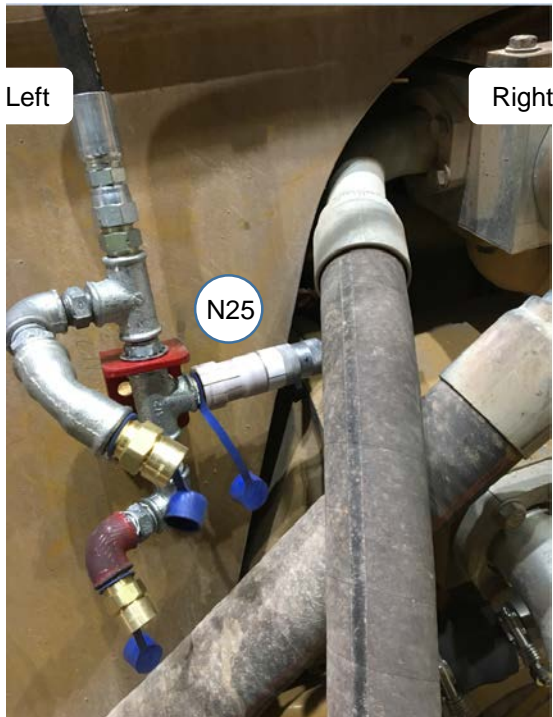




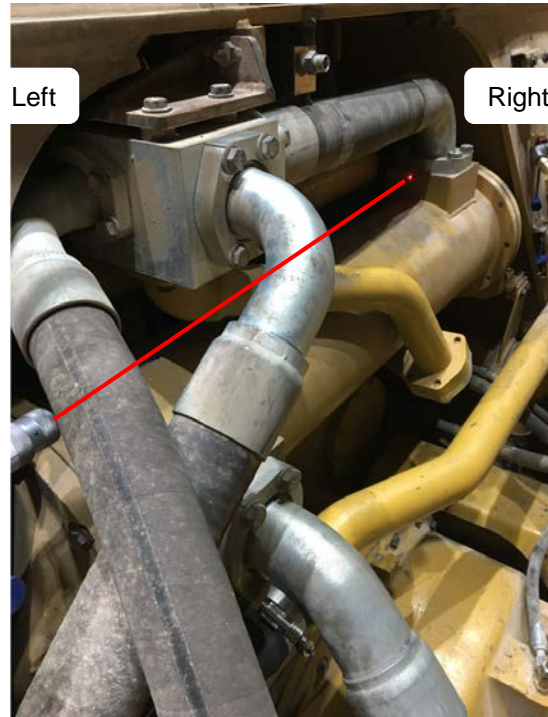
**N25 Nozzle**

- Locate **N25** on the back left-side of the horse collar.
- Aim **N25** in, covering the hydraulic hose connections and backside of engine compartment.

**Location – Back View**



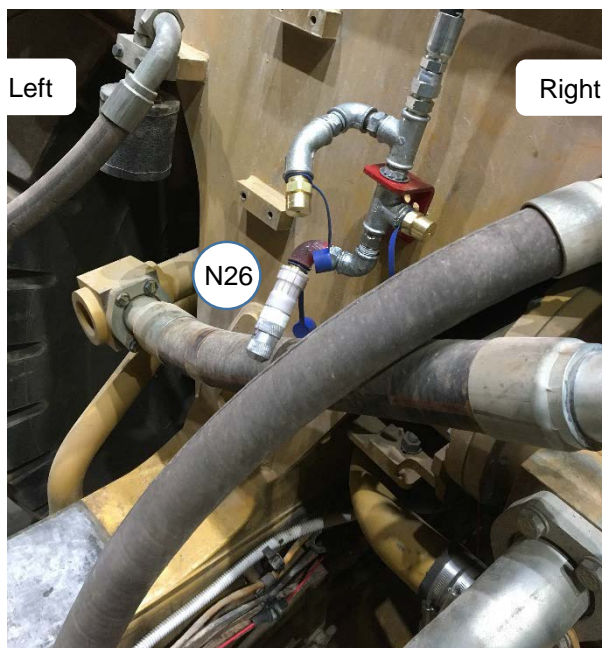
**Coverage – Back/Left View – Aim Point**



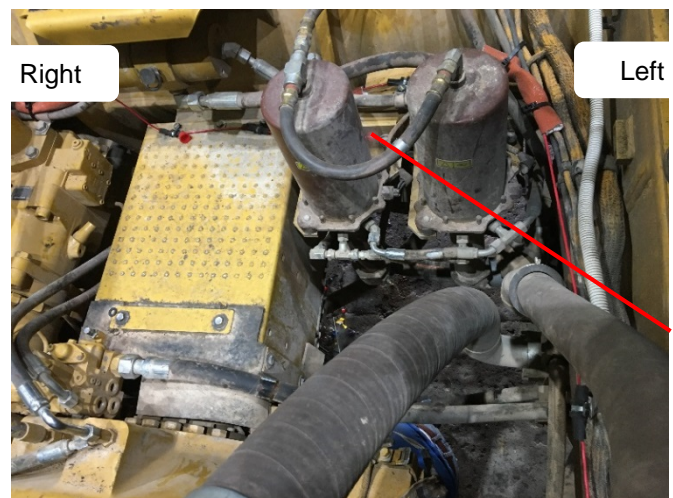
**N26 Nozzle**

- Locate **N26** on the back left-side of the horse collar.
- Aim **N26** down and slightly in, covering the left-side filters and pumps.

**Location – Back/Right View**



**Coverage – Front/Left View – Aim Point**



**CAT 793D (HAA), LVS-9.5 NOZZLE SCHEDULE**

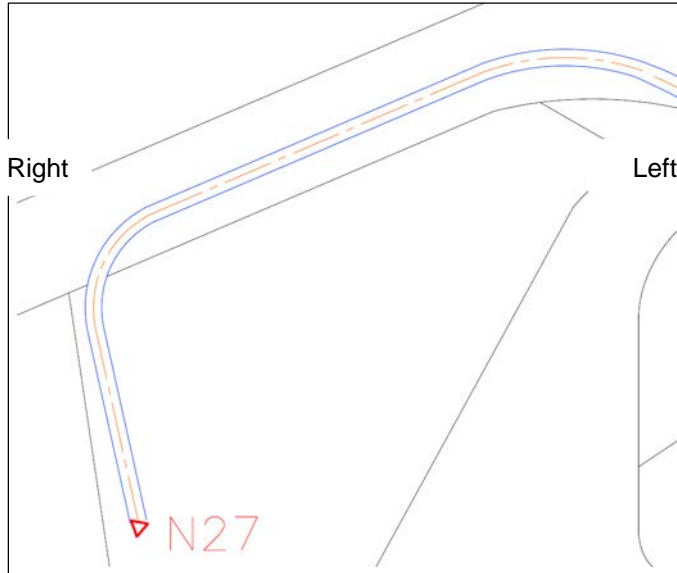
(Form No. F-2018071)

PAGE 14 REV. 0 2018-MAY-11

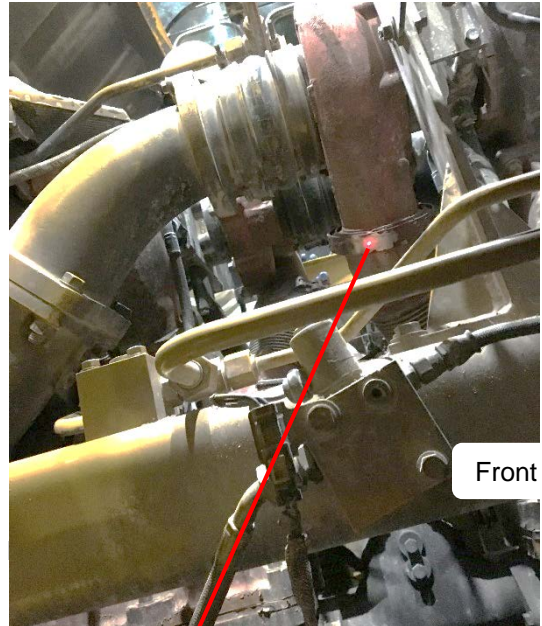
**N27 Nozzle**

- Locate **N27** under right air intake bracket, near center of engine.
- Aim **N27** up and forward, at 12 in. turbo, covering front right turbo pack.

**Location – Front/Left View**



**Coverage – Right View – Aim Point**



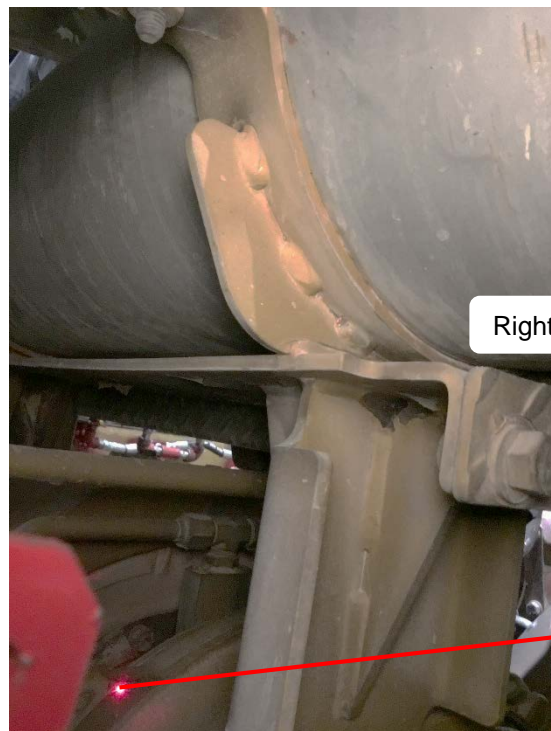
**N28 Nozzle**

- Locate **N28** on back right corner of horse collar, in engine compartment.
- Aim **N28** down and in, covering back right-side of engine.

**Location – Front View**



**Coverage – Rear/Right View – Aim Point**

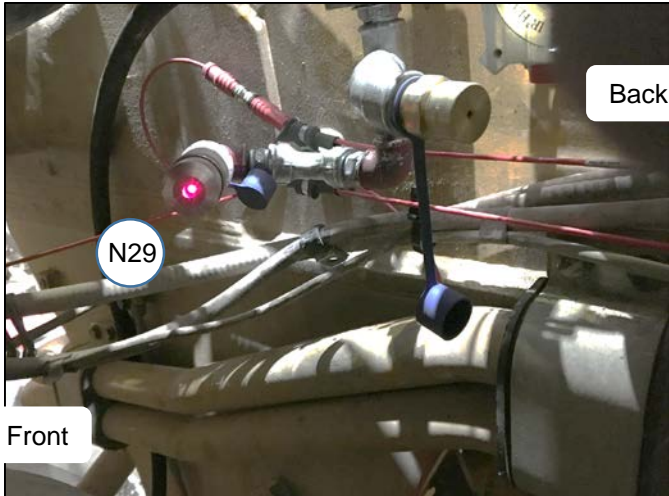




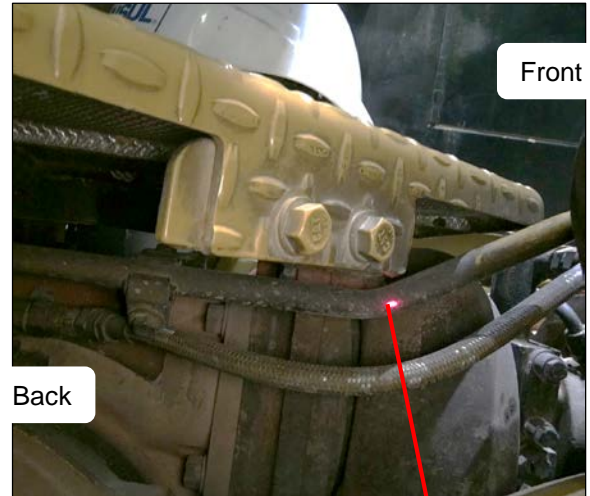
**N29 Nozzle**

- Locate **N29** on the back right corner of the horse collar, in the engine compartment.
- Aim **N29** down and forward, covering the top of the engine and front right turbo pack.

**Location – Front View**



**Coverage – Back/Right View – Aim Point**



**N30 Nozzle**

- Locate **N30** on back left corner of horse collar, in engine compartment.
- Aim **N30** down and in, covering back left-side of engine and turbo pack.

**Location – Front/Left View**



**CAT 793D (HAA), LVS-9.5 NOZZLE SCHEDULE**

(Form No. F-2018071)

PAGE 16 REV. 0 2018-MAY-11

**NOTES:**